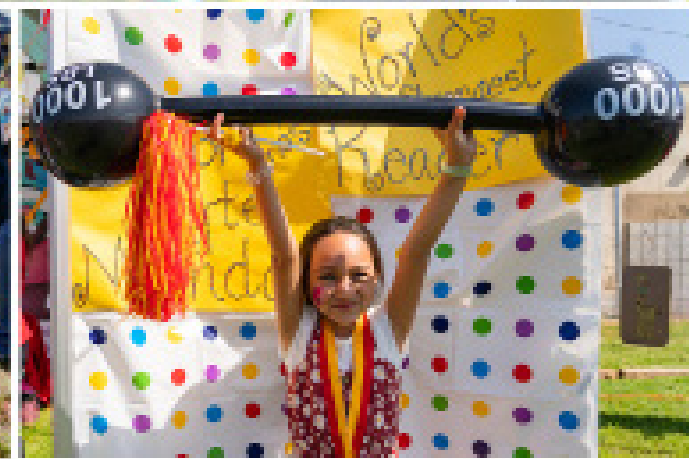


# FAMILY ENGAGEMENT CALENDAR



2023-2024



# MISSION

The mission of the Rialto Unified School District, the bridge that connects students to their aspirations for the future, is to ensure each student achieves personal and career fulfillment within a global society, through a vital system distinguished by:

- High expectation for student achievement
- Safe and engaging learning environments
- Effective family and community involvement
- Learning opportunities beyond the traditional school setting
- Appreciation of universal diversity



| Acronyms | Definition  |
|----------|---|
| AP       | Advanced Placement  |
| CAASPP   | California Assessment of Student Performance and Progress |
| DAC      | District Advisory Committee                               |
| DAPAAC   | District African American Parent Advisory Council         |
| DELAC    | District English Learner Advisory Committee               |
| DLI      | Dual Language Immersion                                   |
| ES       | Elementary School   |
| GATE     | Gifted and Talented Education                             |
| HS       | High School   |
| LCAP     | Local Control and Accountability Plan                     |

| Acronyms | Definition                                     |
|----------|--|
| MLP      | Multilingual Programs                          |
| MS       | Middle School                                  |
| PSAT     | Preliminary Scholastic Aptitude Test           |
| SBCSS    | San Bernardino County Superintendent of School |
| STEM     | Science Technology Engineering Math            |
| TUPE     | Tobacco Use Prevention Education               |
| PDC      | Professional Development Center                |
| PTA      | Parent Teacher Association                     |

Hybrid - In-person or Virtual

# July 2023

## Literacy, Numeracy, Future Ready

Disclosure: "Stay informed about school-specific events by regularly checking your student's school website, newsletters, and the Remind App for up-to-date information."



| Sunday | Monday  | Tuesday  | Wednesday  | Thursday  | Friday  | Saturday |
|--------|---|--|--|---|---|----------|
|        |   |  |  |   |   | 1        |
| 2      | 3<br>*No School<br>*Summer Break<br>*Summer Food Service Program<br>11:30am-12:30pm (Rialto Library, Frisbie Park, & Rialto City Park)  | 4<br>*No School<br>*Summer Break<br><b>Independence Day</b>  | 5<br>*No School<br>*Summer Break<br>*Summer Food Service Program<br>11:30am-12:30pm (Rialto Library, Frisbie Park, & Rialto City Park)   | 6<br>*No School<br>*Summer Break<br>*Summer Food Service Program<br>11:30am-12:30pm (Rialto Library, Frisbie Park, & Rialto City Park)  | 7<br>*No School<br>*Summer Break<br>*Summer Food Service Program<br>Pump-It-Up BBQ<br>11:30am-1:30pm<br>(Rialto Joe Sampson Park)       | 8        |
| 9      | 10<br>*No School<br>*Summer Break<br>*Summer Food Service Program<br>11:30am-12:30pm (Rialto Library, Frisbie Park, & Rialto City Park)   | 11<br>*No School<br>*Summer Break<br>*Summer Food Service Program<br>11:30am-12:30pm (Rialto Library, Frisbie Park, & Rialto City Park)  | 12<br>*No School<br>*Summer Break<br>*Summer Food Service Program<br>11:30am-12:30pm (Rialto Library, Frisbie Park, & Rialto City Park)<br>*Board Mtg 7pm-10pm<br>Hybrid (District Office)   | 13<br>*No School<br>*Summer Break<br>*Summer Food Service Program<br>11:30am-12:30pm (Rialto Library, Frisbie Park, & Rialto City Park) | 14<br>*No School<br>*Summer Break<br>*Summer Food Service Program<br>11:30am-12:30pm (Rialto Library, Frisbie Park, & Rialto City Park) | 15       |
| 16     | 17<br>*No School<br>*Summer Break<br>*Summer Food Service Program<br>11:30am-12:30pm (Rialto Library, Frisbie Park, & Rialto City Park)<br>*Career Technical Education<br>12pm-1pm English   1pm-2pm Spanish<br>Hybrid (PDC-D2) | 18<br>*No School<br>*Summer Break<br>*Summer Food Service Program<br>11:30am-12:30pm (Rialto Library, Frisbie Park, & Rialto City Park)<br>*Parent Health & Immunization<br>Resource Workshop<br>11am-12pm English   12pm-1pm<br>Spanish Hybrid (PDC-D2) | 19<br>*No School<br>*Summer Break<br>*Summer Food Service Program<br>11:30am-12:30pm (Rialto Library, Frisbie Park, & Rialto City Park)<br>*Transportation Informational Meeting<br>12pm-1pm English   1pm-2pm Spanish Hybrid<br>(PDC-D2)<br>*Summer School Graduation 6pm-8pm | 20<br>*No School<br>*Summer Break<br>*Summer Food Service Program<br>11:30am-12:30pm (Rialto Library, Frisbie Park, & Rialto City Park) | 21<br>*No School<br>*Summer Break<br>*Summer Food Service Program<br>11:30am-12:30pm (Rialto Library, Frisbie Park, & Rialto City Park) | 22       |
| 23     | 24<br>*No School<br>*Summer Break<br>*Summer Food Service Program<br>11:30am-12:30pm (Rialto Library, Frisbie Park, & Rialto City Park)   | 25<br>*No School<br>*Summer Break<br>*Summer Food Service Program<br>11:30am-12:30pm (Rialto Library, Frisbie Park, & Rialto City Park)  | 26<br>*No School<br>*Summer Break<br>*Summer Food Service Program<br>11:30am-12:30pm (Rialto Library, Frisbie Park, & Rialto City Park)  | 27<br>*No School<br>*Summer Break<br>*Summer Food Service Program<br>11:30am-12:30pm (Rialto Library, Frisbie Park, & Rialto City Park) | 28<br>*No School<br>*Summer Break<br>*Summer Food Service Program<br>11:30am-12:30pm (Rialto Library, Frisbie Park, & Rialto City Park) | 29       |
| 30     | 31<br>*No School<br>*Summer Break<br>*Parent PBIS Workshop<br>12pm-1pm English   1pm-2pm Spanish<br>Hybrid (PDC-D2)   |  |  |   |   |          |

Should you have any questions contact the District Curtis T. Winton Parent Institute Office at (909) 879-6000 ext. 2903/2904

# August 2023

## Literacy, Numeracy, Future Ready

Disclosure: "Stay informed about school-specific events by regularly checking your student's school website, newsletters, and the Remind App for up-to-date information."



| Sunday | Monday   | Tuesday                                   | Wednesday   | Thursday   | Friday  | Saturday                      |
|--------|--|---|---|--|---|-------------------------------|
|        |  | 1<br><br>*No School<br>*Summer Break      | 2<br><br>*No School<br>*Summer Break  | 3<br><br>*No School<br>*Summer Break   | 4<br><br>*No School<br>*Summer Break  | 5                             |
| 6      | 7<br><br>*First Day of School  | 8   | 9<br><br>*Special Services Support Hours<br>3pm-4pm (Virtual)<br>*Board Mtg<br>7pm-10pm Hybrid<br>(District Office) | 10<br><br>*Back to School Night ES   | 11  | 12                            |
| 13     | 14<br><br>*Special Services<br>Transition Parent Mtg<br>9am-11am (PDC-D2)                            | 15<br><br>*PTA Mtg<br>5pm-7:30pm (PDC-D2) | 16<br><br>*Back to School Night MS  | 17<br><br>*DAAPAC<br>5:30pm-7:45pm (PDC Conf.)   | 18<br><br>*MLP DELAC Meeting<br>9am-11am (PDC Bistro)<br>*Keystone Pantry Food<br>Distribution<br>4pm-6pm (PDC) | 19<br><br>*Step Up HS         |
| 20     | 21<br><br>*Special Services Parent<br>Empowerment<br>8:30am-10:30am, 10:30am-12:30pm<br>(PDC Bistro) | 22  | 23<br><br>*Board Mtg<br>7pm-10pm Hybrid<br>(District Office)  | 24<br><br>*Back to School Night HS<br>*Alianza Latina<br>6pm-8pm (PDC Conf.)<br>*Danza Azteca<br>6pm-8:30pm (PDC Bistro) | 25  | 26<br><br>*Step Up ES, MS, HS |
| 27     | 28<br><br>*Special Services Parent<br>Empowerment<br>8:30am-10:30am,<br>10:30am-12:30pm (PDC Bistro) | 29  | 30  | 31<br><br>*Alianza Latina<br>6pm-8pm (PDC Conf.)<br>*Danza Azteca<br>6pm-8:30pm (PDC Bistro)                             |   |                               |

Should you have any questions contact the District Curtis T. Winton Parent Institute Office at (909) 879-6000 ext. 2903/2904



# September 2023

Literacy, Numeracy, Future Ready

**Disclosure:** "Stay informed about school-specific events by regularly checking your student's school website, newsletters, and the Remind App for up-to-date information."



| Sunday | Monday  | Tuesday   | Wednesday   | Thursday   | Friday  | Saturday  |
|--------|---|---|---|--|---|---|
|        |   |   |   |  | 1   | 2<br><br><i>*Step Up HS</i>   |
| 3      | 4<br><br><i>*No School<br/>Labor Day</i>  | 5   | 6<br><br><i>*Virtual Chat w/Chief<br/>9am-10am (Virtual)<br/><br/>*Special Services Support Hours<br/>3pm-4pm (Virtual)</i>   | 7<br><br><i>*DAAPAC<br/>5:30pm-8pm (PDC Conf.)<br/><br/>*Danza Azteca<br/>6pm-8:30pm (PDC Bistro)</i>  | 8<br><br><i>*MLP DELAC Meeting<br/>9am-11am (PDC Bistro)<br/><br/>*Special Services Love &amp; Logic<br/>9am-11am (PDC-S3)</i>              | 9<br><br><i>*Family Summit<br/>8am-1:30pm (Rialto HS)</i>   |
| 10     | 11<br><br><i>*Special Services Parent<br/>Empowerment<br/>8:30am-10:30am,<br/>10:30am-12:30pm (PDC Bistro)</i>  | 12  | 13<br><br><i>*Special Services Father Figure<br/>3:30pm-5:30pm Hybrid (PDC Bistro)<br/><br/>*Board Mtg<br/>7pm-10pm<br/>Hybrid (District Office)</i>  | 14<br><br><i>*Danza Azteca<br/>6pm-8:30pm (PDC Bistro)</i>   | 15<br><br><i>*Special Services Love &amp; Logic<br/>9am-11am (PDC-S3)<br/><br/>*Keystone Pantry Food<br/>Distribution<br/>4pm-6pm (PDC)</i> | 16<br><br><i>*Step Up ES, MS, HS</i>  |
| 17     | 18<br><i>*Special Services Parent<br/>Empowerment<br/>8:30am-10:30am,<br/>10:30am-12:30pm (PDC Bistro)<br/><br/>*Young Visionaries S.M.A.A.R.T.<br/>5pm-6pm English<br/>6pm-7pm Spanish (Virtual)</i> | 19<br><br><i>*PTA Mtg<br/>5pm-7:30pm (PDC-D2)</i> | 20<br><i>*Special Services Father Figure<br/>3:30pm-5:30pm Hybrid (PDC Bistro)<br/><br/>*Special Services PATHS<br/>4pm-5pm (PDC-D2)<br/><br/>*Special Services STRONG<br/>5pm-6pm (PDC-D2)</i>                 | 21<br><br><i>*Special Services Transition<br/>Parent Meeting<br/>4:15pm-5:45pm (PDC-D2)<br/><br/>*Danza Azteca<br/>6pm-8:30pm (PDC Bistro)</i>   | 22<br><br><i>*Special Services Love &amp; Logic<br/>9am-11am (PDC-S3)</i>   | 23<br><br><i>*Step Up ES, MS, HS<br/><br/>*SBCSS Family &amp; Community<br/>Engagement Summit<br/>8am-2pm (CSUSB)</i> |
| 24     | 25  | 26  | 27<br><br><i>*Special Services Support Hours<br/>3pm-4pm (Virtual)<br/><br/>*Special Services Father Figure<br/>3:30pm-5:30pm Hybrid (PDC Bistro)<br/><br/>*Board Mtg 7pm-10pm<br/>Hybrid (District Office)</i> | 28<br><br><i>*Healthy Living: Cal-Fresh<br/>5pm-6pm English<br/>6pm-7pm Spanish Hybrid (PDC-D2)<br/><br/>*Alianza Latina<br/>5:30pm-7:45pm (PDC Conf)<br/><br/>*Danza Azteca<br/>6pm-8:30pm (PDC Bistro)</i> | 29<br><br><i>*Special Services Love &amp; Logic<br/>9am-11am (PDC-S3)</i>   | 30<br><br><i>*Step Up ES, MS, HS</i>  |

Should you have any questions contact the District Curtis T. Winton Parent Institute Office at (909) 879-6000 ext. 2903/2904

\*CSUSB: California State University San Bernardino

# October 2023

Literacy, Numeracy, Future Ready

Disclosure: "Stay informed about school-specific events by regularly checking your student's school website, newsletters, and the Remind App for up-to-date information."



| Sunday | Monday  | Tuesday   | Wednesday  | Thursday   | Friday   | Saturday  |
|--------|---|---|--|--|--|---|
| 1      | 2<br><br>*Special Services Parent Empowerment<br>8:30am-10:30am<br>10:30am-12:30pm (PDC Bistro)   | 3<br><br>*Remind Office Hour<br>5pm-5:30pm English<br>5:30pm-6pm Spanish (Virtual)          | 4<br>*Special Services Support Hours<br>3pm-4pm (Virtual)<br>*Special Services Father Figure<br>3:30pm-5:30pm Hybrid (PDC Bistro)<br>*Special Services PATHS<br>4pm-5pm (PDC-D2)<br>*Special Services STRONG<br>5pm-6pm (PDC-D2) | 5<br><br>*DAAPAC<br>5:30pm-7pm (PDC Conf)<br>*Danza Azteca<br>6pm-8:30pm (PDC Bistro)  | 6<br><br>*End of 1st Quarter MS, HS<br>*Special Services Love & Logic<br>9am-11am (PDC-S3)<br>*Hispanic Heritage Celebration<br>5:30pm-9pm (PDC) | 7<br><br>*Step Up ES, MS, HS  |
| 8      | 9<br><br>*Special Services Parent Empowerment<br>8:30am-10:30am<br>10:30am-12:30pm (PDC Bistro)   | 10  | 11<br>*Special Services Support Hours<br>3pm-4pm (Virtual)<br>*Board Mtg<br>7pm-10pm Hybrid (District Office)  | 12<br>*Exceptional Grading Practices Committee Mtg<br>4pm-5pm (Bistro)<br>*Danza Azteca<br>6pm-8:30pm (PDC Bistro)   | 13<br>*Special Services Love & Logic<br>9am-11am (PDC-S3)<br>*Keystone Pantry Food Distribution<br>4pm-6pm (PDC)                                 | 14<br><br>*Step Up MS, HS   |
| 15     | 16<br>*Special Services Parent Empowerment<br>8:30am-10:30am<br>10:30am-12:30pm (PDC Bistro)<br>*Young Visionaries S.M.A.A.R.T.<br>5pm-6pm English<br>6pm-7pm Spanish (Virtual) | 17<br><br>*PTA Mtg<br>5pm-7:30pm (PDC-D2)<br>*LCAP Community Mtg<br>5:30pm-7pm (PDC Bistro) | 18<br>*Special Services Support Hours<br>3pm-4pm (Virtual)   | 19<br>*Great California Shakeout<br>10:19am<br>*Special Services Transition Parent Meeting<br>4:15pm-5:45pm (PDC-D2)<br>*Alianza Latina<br>5:30pm-7:45pm (PDC Conf)<br>*Danza Azteca 6pm-8:30pm (PDC Bistro) | 20   | 21<br><br>*Step Up ES, MS, HS<br>*LEGO Scrimmage<br>9am-2pm (Kucera MS) |
| 22     | 23<br><br>*STEM Cares Cohort<br>2:30pm-5pm (Various Locations)  | 24  | 25<br>*Special Services Support Hours<br>3pm-4pm (Virtual)<br>*Board Mtg<br>7pm-10pm Hybrid (District Office)  | 26<br>*Healthy Living: Cal-Fresh<br>5pm-6pm English<br>6pm-7pm Spanish (Virtual)<br>*Danza Azteca<br>6pm-8:30pm (PDC Bistro)   | 27<br><br>*End of 1st Trimester ES<br>*Garden Social Cohort<br>2:30pm-4pm (Various sites)  | 28<br><br>*Step Up ES, MS, HS<br>*Enrichment Day ES, MS<br>8am-5pm      |
| 29     | 30  | 31  |  |  |  |   |

Should you have any questions contact the District Curtis T. Winton Parent Institute Office at (909) 879-6000 ext. 2903/2904



# November 2023

## Literacy, Numeracy, Future Ready

Disclosure: "Stay informed about school-specific events by regularly checking your student's school website, newsletters, and the Remind App for up-to-date information."



| Sunday | Monday  | Tuesday  | Wednesday   | Thursday   | Friday  | Saturday   |
|--------|---|--|---|--|---|--|
|        |   |  | 1<br><br>*Special Services Support Hours<br>3pm-4pm (Virtual)   | 2<br>*Dia De Los Muertos Celebration<br>5pm-8pm (PDC)<br>*Alianza Latina<br>5pm-8pm (PDC)<br>*DAAPAC<br>5:30pm-7pm (PDC Conf)  | 3<br><br>*MLP DELAC Meeting<br>9am-11am (Bistro)              | 4<br><br>*Step Up ES, MS, HS<br>*LEGO Scrimmage<br>8am-5pm (Rialto MS) |
| 5      | 6<br><br>*STEM CARES Cohort<br>2:30pm-5pm (Various Locations)                             | 7  | 8<br>*English Language Arts Strategist Workshop<br>9am-10am English   10:30am-11:30am Spanish Hybrid (Dunn ES)<br>*Special Services Support Hours<br>3pm-4pm (Virtual)<br>*Special Services PATHS 4pm-5pm (PDC-D2)<br>*Special Services STRONG 5pm-6pm (PDC-D2) | 9<br>*Garden Social Cohort<br>2:30pm-4pm (Various sites)<br>*Special Services Transition Parent Mtg<br>4:15pm-5:45pm (PDC-D2)<br>*Danza Azteca<br>6pm-8:30pm (PDC Bistro)    | 10<br><br>*No School<br>Veterans' Day                         | 11   |
| 12     | 13<br><br>*Young Visionaries S.M.A.A.R.T.<br>5pm-6pm English<br>6pm-7pm Spanish (Virtual) | 14<br><br>*PTA Mtg<br>5pm-7:30pm (PDC-D2)                            | 15<br>*Math Strategist Workshop<br>9am-10am English<br>10:30am-11:30am Spanish Hybrid (Werner ES)<br>*Special Services Support Hours<br>3pm-4pm (Virtual)<br>*Board Mtg 7pm-10pm Hybrid (District Office)   | 16<br><br>*Danza Azteca<br>6pm-8:30pm (PDC Bistro)   | 17<br><br>*Keystone Pantry Food Distribution<br>4pm-6pm (PDC) | 18   |
| 19     | 20<br>*No School<br>*Fall Break<br>*Enrichment Day ES, MS<br>8am-5pm                      | 21<br>*No School<br>*Fall Break<br>*Enrichment Day ES, MS<br>8am-5pm | 22<br>*No School<br>*Fall Break<br>*Enrichment Day ES, MS<br>8am-5pm  | 23<br>*No School<br>*Fall Break<br>Thanksgiving Holiday  | 24<br><br>*No School<br>*Fall Break                           | 25   |
| 26     | 27  | 28<br><br>*LCAP Community Mtg<br>5:30pm-7pm (PDC Bistro)             | 29<br><br>*Special Services Support Hours<br>3pm-4pm (Virtual)  | 30<br>*UC/Cal State Admission Application Deadline<br>*Healthy Living: Cal-Fresh<br>5pm-6pm English<br>6pm-7pm Spanish (Virtual)<br>*Danza Azteca<br>6pm-8:30pm (PDC Bistro) |   |  |

Should you have any questions contact the District Curtis T. Winton Parent Institute Office at (909) 879-6000 ext. 2903/2904





# January 2024

## Literacy, Numeracy, Future Ready

Disclosure: "Stay informed about school-specific events by regularly checking your student's school website, newsletters, and the Remind App for up-to-date information."



| Sunday | Monday   | Tuesday   | Wednesday   | Thursday  | Friday  | Saturday                      |
|--------|--|---|---|---|---|-------------------------------|
|        | 1<br><br>*No School<br>*Winter Break<br>New Year's Day   | 2<br><br>*No School<br>*Winter Break  | 3<br><br>*No School<br>*Winter Break  | 4<br><br>*No School<br>*Winter Break<br>*Enrichment Day ES, MS<br>8am-5pm   | 5<br><br>*No School<br>*Winter Break<br>*Enrichment Day ES, MS<br>8am-5pm   | 6                             |
| 7      | 8<br><br>*No School<br>*Winter Break   | 9   | 10<br><br>*Special Services Support Hours<br>3pm-4pm (Virtual)  | 11<br><br>*DAAPAC<br>5:30pm-7pm (PDC Conf)<br>*Danza Azteca<br>6pm-8:30pm (PDC Bistro)  | 12  | 13<br><br>*Step Up HS         |
| 14     | 15<br><br>*No School<br>Martin Luther King Jr.<br>Day  | 16<br><br>*PTA Mtg<br>5pm-7:30pm (PDC-D2)   | 17<br><br>*Special Services Support Hours<br>3pm-4pm (Virtual)<br>*Board Mtg<br>7pm-10pm Hybrid<br>(District Office)  | 18<br>*Special Services<br>Transition Parent Meeting<br>4:15pm-5:45pm (PDC-D2)<br>*Remind Office Hour<br>5pm-5:30pm English<br>5:30pm-6pm Spanish (Virtual)<br>*Danza Azteca<br>6pm-8:30pm (PDC Bistro) | 19<br><br>*District Science Fair Projects Due<br>*MLP DELAC Meeting<br>9am-11am (PDC Bistro)<br>*Keystone Pantry Food Distribution<br>4pm-6pm (PDC) | 20<br><br>*Step Up ES, MS, HS |
| 21     | 22<br><br>*STEM Cares Mtg<br>2:30pm-5pm (Various Locations)<br>*Young Visionaries S.M.A.A.R.T.<br>5pm-6pm English<br>6pm-7pm Spanish (Virtual) | 23<br><br>*Parent PBIS Workshop<br>5pm-6pm English<br>6pm-7pm Spanish Hybrid (PDC-D2) | 24<br><br>*Special Services Support Hours<br>3pm-4pm (Virtual)<br>*Special Services PATHS<br>4pm-5pm (PDC-D2)<br>*Special Services STRONG<br>5pm-6pm (PDC-D2) | 25<br>*Healthy Living: Cal-Fresh<br>5pm-6pm English<br>6pm-7pm Spanish (Virtual)<br>*Alianza Latina<br>5:30pm-7:45pm (PDC Conf)<br>*Danza Azteca<br>6pm-8:30pm (PDC Bistro)                             | 26<br><br>*Garden Social Cohort<br>2:30pm-4pm (Various sites)   | 27                            |
| 28     | 29<br><br>*RSEF District Science Fair Awards<br>6pm-7pm (Carter HS)  | 30  | 31<br><br>*Special Services Support Hours<br>3pm-4pm (Virtual)  |   |   |                               |

Should you have any questions contact the District Curtis T. Winton Parent Institute Office at (909) 879-6000 ext. 2903/2904

# February 2024

## Literacy, Numeracy, Future Ready

Disclosure: "Stay informed about school-specific events by regularly checking your student's school website, newsletters, and the Remind App for up-to-date information."



| Sunday | Monday  | Tuesday  | Wednesday   | Thursday  | Friday   | Saturday   |
|--------|---|--|---|---|--|--|
|        |   |  |   | 1<br>*DAAPAC<br>5:30pm-7pm (PDC Conf)<br>*Danza Azteca<br>6pm-8:30pm (PDC Bistro)   | 2  | 3<br><br>*Step Up ES, MS, HS                                       |
| 4      | 5<br>*STEM CARES Cohort<br>2:30pm-5pm (Various Locations)                             | 6<br>*ELA/Math Strategist Workshop<br>9am-10am English<br>10:30am-11:30am Spanish (PDC-D2) | 7<br>*Special Services Support Hours<br>3pm-4pm (Virtual)<br>*Board Mtg 7pm-10pm<br>Hybrid (District Office)  | 8<br>*TUPE Workshop<br>5pm-6pm English<br>6pm-7pm Spanish (Virtual)<br>*Danza Azteca<br>6pm-8:30pm (PDC Bistro)   | 9<br>*MLP DELAC Meeting<br>9am-11am (PDC Bistro)   | 10<br><br>*Step Up HS  |
| 11     | 12<br>*No School<br>*Lincoln's Day<br>*Enrichment Day ES, MS<br>8pm-5pm               | 13<br>*PTA Mtg<br>5pm-7:30pm (PDC-D2)<br>*LCAP Community Mtg<br>5:30pm-7:00pm (PDC Bistro) | 14<br>*Special Services Support Hours<br>3pm-4pm (Virtual)<br>*Special Services PATHS<br>4pm-5pm (PDC-D2)<br>*Special Services STRONG<br>5pm-6pm (PDC-D2) | 15<br>*Danza Azteca<br>6pm-8:30pm (PDC Bistro)  | 16<br>*Keystone Pantry Food Distribution<br>& Black History Celebration<br>4pm-6pm (PDC) | 17<br><br>*Step Up HS  |
| 18     | 19<br>*No School<br>Presidents' Day   | 20<br>*PTA Mtg<br>5pm-7:30pm (PDC-D2)  | 21<br>*Special Services Support Hours<br>3pm-4pm (Virtual)<br>*Board Mtg<br>7pm-10pm Hybrid<br>(District Office)  | 22<br>*Alianza Latina<br>5:30pm-7:45pm (PDC Conf)<br>*Danza Azteca<br>6pm-8:30pm (PDC Bistro)   | 23<br>*End of 2nd Trimester ES<br>*Garden Social Cohort<br>2:30pm-4pm (Various Sites)    | 24<br><br>*Step Up ES, MS, HS<br>*DAAPAC Black History Celebration |
| 25     | 26<br>*Young Visionaries S.M.A.A.R.T.<br>5pm-6pm English<br>6pm-7pm Spanish (Virtual) | 27   | 28<br>*Special Services Support Hours<br>3pm-4pm (Virtual)  | 29<br>*Special Services<br>Transition Parent Meeting<br>4:15pm-5:45pm (PDC-D2)<br>*Health Living: Cal-Fresh<br>5pm-6pm English<br>6pm-7pm Spanish (Virtual)<br>*Danza Azteca<br>6pm-8:30pm (PDC Bistro) |  |  |

Should you have any questions contact the District Curtis T. Winton Parent Institute Office at (909) 879-6000 ext. 2903/2904





# April 2024

## Literacy, Numeracy, Future Ready

Disclosure: "Stay informed about school-specific events by regularly checking your student's school website, newsletters, and the Remind App for up-to-date information."



| Sunday | Monday   | Tuesday  | Wednesday  | Thursday   | Friday   | Saturday   |
|--------|--|--|--|--|--|--|
|        | 1  | 2  | 3<br><br>*Special Services Father Figure<br>3:30pm-5:30pm Hybrid (PDC Bistro)  | 4<br><br>*DAAPAC<br>5:30pm-7pm (PDC Conf)<br>*Danza Azteca<br>6pm-8:30pm (PDC Bistro)  | 5  | 6<br><br>*Elementary Literacy Fair<br>Celebration ES<br>9am-1pm (PDC)<br>*Step Up ES, MS, HS |
| 7      | 8  | 9<br><br>*Transition to College<br>10am-11pm English<br>11am-12pm Spanish Hybrid<br>(PDC-D2)<br>*PTA Mtg 5pm-7:30pm (PDC-D2) | 10<br><br>*Special Services Support Hours<br>3pm-4pm (Virtual)<br>*Board Mtg 7pm-10pm<br>Hybrid (District Office)  | 11<br><br>*Special Services<br>Transition Parent Meeting<br>4:15pm-5:45pm (PDC-D2)<br>*Art Fair Awards Night<br>5:30pm-6:30pm (PDC Conf)<br>*Danza Azteca<br>6pm-8:30pm (PDC Bistro)     | 12<br><br>*MLP DELAC Meeting<br>9am-11am (PDC Bistro)<br>*Garden Social Cohort<br>2:30pm-4pm (Various Sites)<br>*Keystone Pantry Food Distribution<br>4pm-6pm (PDC)<br>*MLP Reclassification Ceremony<br>4pm-8pm (Carter HS) | 13<br><br>*Step Up HS<br>*Enrichment Day ES, MS<br>8am-5pm                                   |
| 14     | 15<br><br>*STEM CARES Cohort<br>3:30pm-4:30pm (PDC)<br>*Young Visionaries S.M.A.A.R.T.<br>5pm-6pm English<br>6pm-7pm Spanish (Virtual) | 16<br><br>*Music Festival- Strings<br>9am-2pm (Carter HS)<br>*LCAP Community Mtg<br>5:30pm-7pm (PDC Bistro)                  | 17<br><br>*Special Services<br>Support Hours<br>3pm-4pm (Virtual)<br>*Special Services PATHS<br>4pm-5pm (PDC-D2)<br>*Special Services STRONG<br>5pm-6pm (PDC-D2) | 18<br><br>*Music Festival- Band<br>9am-2pm (Carter HS)<br>*Danza Azteca<br>6pm-8:30pm (PDC Bistro)   | 19<br><br>*Music Festival - Choir<br>9am-2pm (Carter HS)   | 20<br><br>*Step Up ES, MS, HS<br>*DLI Gr 5 <sup>th</sup> Celebration<br>9am-11am (Rialto HS) |
| 21     | 22<br><br>*Youth Action Climate Summit<br>12pm-6pm (Eisenhower HS)<br>Earth Day  | 23   | 24<br><br>*Special Services<br>Support Hours<br>3pm-4pm (Virtual)<br>*Board Mtg<br>7pm-10pm<br>Hybrid (District Office)  | 25<br><br>*Healthy Living:<br>Cal-Fresh<br>5pm-6pm English<br>6pm-7pm Spanish Hybrid (PDC-D2)<br>*Alianza Latina<br>5:30pm-7:45pm (PDC Conf)<br>*Danza Azteca<br>6pm-8:30pm (PDC Bistro) | 26   | 27<br><br>*Step Up ES, MS, HS<br>*The Ritz<br>5:30pm-8:30pm<br>(Carter HS)                   |
| 28     | 29   | 30   |  |  |  |  |

Should you have any questions contact the District Curtis T. Winton Parent Institute Office at (909) 879-6000 ext. 2903/2904



# May 2024

## Literacy, Numeracy, Future Ready

Disclosure: "Stay informed about school-specific events by regularly checking your student's school website, newsletters, and the Remind App for up-to-date information."



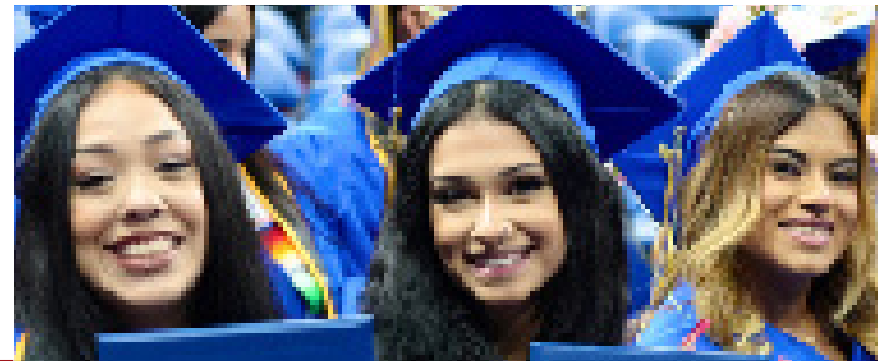
| Sunday | Monday   | Tuesday                                   | Wednesday   | Thursday   | Friday  | Saturday  |
|--------|--|---|---|--|---|---|
|        |  |   | 1<br><br>*Special Services Support Hours<br>3pm-4pm (Virtual)   | 2<br><br>*DAAPAC Ceremony<br>5:30pm-7:30pm (PDC Conf)<br>*Danza Azteca<br>6pm-8:30pm (PDC Bistro)                                      | 3<br><br>*Garden Social Cohort<br>2:30pm-4pm (Various sites)  | 4<br><br>*Step Up ES, MS, HS  |
| 5      | 6<br><br>*STEM CARES Cohort<br>3:30pm-4:30pm (PDC) | 7   | 8<br><br>*Special Services Support Hours<br>3pm-4pm (Virtual)<br>*Board Mtg<br>7pm-10pm Hybrid<br>(District Office)                                       | 9<br><br>*Exceptional Grading Practices<br>Committee Mtg<br>4pm-5pm (PDC Bistro)<br>*Danza Azteca<br>6pm-8:30pm (PDC Bistro)           | 10<br><br>*Alianza Latina Mother's Day<br>Celebration<br>9am-12pm (PDC Bistro)  | 11<br><br>*Step Up ES, MS, HS   |
| 12     | 13   | 14  | 15<br>*Special Services Support Hours<br>3pm-4pm (Virtual)<br>*Special Services PATHS<br>4pm-5pm (PDC-D2)<br>*Special Services STRONG<br>5pm-6pm (PDC-D2) | 16<br><br>*Healthy Living: Cal-Fresh<br>5pm-6pm English<br>6pm-7pm Spanish Hybrid (PDC-D2)<br>*Danza Azteca<br>6pm-8:30pm (PDC Bistro) | 17<br><br>*LCAP Meeting with DELAC, DAAPAC<br>and Community<br>9am-11am (PDC Bistro)<br>*Keystone Pantry Food Distribution<br>4pm-6pm (PDC) | 18<br><br>*Step Up ES, MS, HS<br>*Enrichment Day ES, MS<br>8am-5pm  |
| 19     | 20   | 21<br><br>*PTA Mtg<br>5pm-7:30pm (PDC-D2) | 22<br><br>*Special Services Support Hours<br>3pm-4pm (Virtual)<br>*Board Mtg<br>7pm-10pm Hybrid (District Office)   | 23<br><br>*Music Spectacular ES<br>5:30pm-7pm (Carter HS)<br>*Danza Azteca<br>6pm-8:30pm (PDC Bistro)                                  | 24<br><br>*Music Spectacular ES<br>5:30pm-7pm (Carter HS)   | 25  |
| 26     | 27<br><br>Memorial Day                             | 28  | 29<br><br>*Special Services Support Hours<br>3pm-4pm (Virtual)  | 30<br><br>*Last Day of School<br>*End of 3rd Trimester ES<br>*End of 4th Quarter MS, HS  | 31<br><br>*No School<br>*Summer Break   | Disclosure: Please refer to your school site for Middle School Promotions and High School Graduation dates and times. |

Should you have any questions contact the District Curtis T. Winton Parent Institute Office at (909) 879-6000 ext. 2903/2904

# June 2024

## Literacy, Numeracy, Future Ready

**Disclosure:** "Stay informed about school-specific events by regularly checking your student's school website, newsletters, and the Remind App for up-to-date information."



| Sunday | Monday   | Tuesday  | Wednesday  | Thursday   | Friday   | Saturday  |
|--------|--|--|--|--|--|---|
|        |  |  |  |  |  | 1   |
| 2      | 3<br>*No School<br>*Summer Break<br>*Enrichment Day ES, MS<br>8pm-5pm  | 4<br>*No School<br>*Summer Break<br>*Enrichment Day ES, MS<br>8pm-5pm  | 5<br>*No School<br>*Summer Break<br>*Enrichment Day ES, MS<br>8pm-5pm  | 6<br>*No School<br>*Summer Break<br>*Enrichment Day ES, MS<br>8pm-5pm  | 7<br>*No School<br>*Summer Break                                       | 8   |
| 9      | 10<br>*No School<br>*Summer Break<br>*Enrichment Day ES, MS<br>8pm-5pm | 11<br>*No School<br>*Summer Break<br>*Enrichment Day ES, MS<br>8pm-5pm<br>*PTA Exec Board/Regular Mtg<br>5pm-7:30pm (PDC-D2) | 12<br>*No School<br>*Summer Break<br>*Enrichment Day ES, MS<br>8pm-5pm<br>*Board Mtg<br>7pm-10pm<br>Hybrid (District Office) | 13<br>*No School<br>*Summer Break<br>*Enrichment Day ES, MS<br>8pm-5pm | 14<br>*No School<br>*Summer Break                                      | 15  |
| 16     | 17<br>*No School<br>*Summer Break<br>*Enrichment Day ES, MS<br>8pm-5pm | 18<br>*No School<br>*Summer Break<br>*Enrichment Day ES, MS<br>8pm-5pm   | 19<br>Juneteenth   | 20<br>*No School<br>*Summer Break<br>*Enrichment Day ES, MS<br>8pm-5pm | 21<br>*No School<br>*Summer Break<br>*Enrichment Day ES, MS<br>8pm-5pm | 22  |
| 23     | 24<br>*No School<br>*Summer Break                                      | 25<br>*No School<br>*Summer Break  | 26<br>*No School<br>*Summer Break<br>*Board Mtg<br>7pm-10pm Hybrid<br>(District Office)                                      | 27<br>*No School<br>*Summer Break                                      | 28<br>*No School<br>*Summer Break                                      | 29<br>Disclosure: Please refer to your school site for Middle School Promotions and High School Graduation dates and times. |
| 30     |  |  |  |  |  |   |

Should you have any questions contact the District Curtis T. Winton Parent Institute Office at (909) 879-6000 ext. 2903/2904



# Rialto Unified School District

## Elementary Schools (ES)

- 11 - Levi Bemis - 774 East Etiwanda • P: (909) 820-7916
- 02 - J.C. Boyd - 310 East Merrill • P: (909) 820-7929
- 04 - Merle Casey - 219 North Eucalyptus • P: (909) 820-7904
- 40 - Sam V. Curtis - 451 South Lilac • P: (909) 421-7366
- 12 - Helen L. Dollahan - 1060 West Etiwanda • P: (909) 820-7943
- 05 - George H. Dunn - 830 North Lilac • P: (909) 820-7872
- 16 - Dr. Edward M. Fitzgerald - 2568 West Terra Vista Dr • P: (909) 854-38
- 36 - Dr. Ernest Garcia - 1390 West Randall • P: (909) 421-7620
- 03 - Lida M. Henry - 470 East Etiwanda • P: (909) 820-7910
- 14 - Elizabeth T. Highbanks - 2241 North Apple • P: (909) 820-7970
- 08 - J. P. Kelly - 380 South Meridian • P: (909) 820-7924
- 97 - Nancy R. Kordyak - 4580 Mango Ave • P: (909) 421-4203
- 09 - A. H. Morgan - 1571 North Sycamore • P: (909) 820-7884
- 15 - Georgja F. Morris - 1900 West Randall • P: (909) 820-6864
- 07 - W. A. Myers - 975 North Meridian • P: (909) 820-7921
- 06 - Lena M. Preston - 1750 North Willow • P: (909) 820-7933
- 13 - Samuel W. Simpson - 1050 South Lilac • P: (909) 820-7954
- 10 - W. J. C. Trapp - 2750 North Riverside • P: (909) 820-7911
- 94 - Charlotte N. Werner - 1050 W Rialto Ave • P: (909) 820-6830

## Middle Schools (MS)

- 18 - Warren H. Frisbie - 1442 North Eucalyptus • P: (909) 820-7887
- 45 - William G. Jehue - 1500 North Eucalyptus • P: (909) 421-7377
- 19 - Ben F. Kolb - 2351 North Spruce • P: (909) 820-7849
- 26 - Ethel Kucera - 2140 West Buena Vista Dr • P: (909) 574-7044
- 17 - Rialto MS - 1262 W Rialto Ave • P: (909) 879-7308

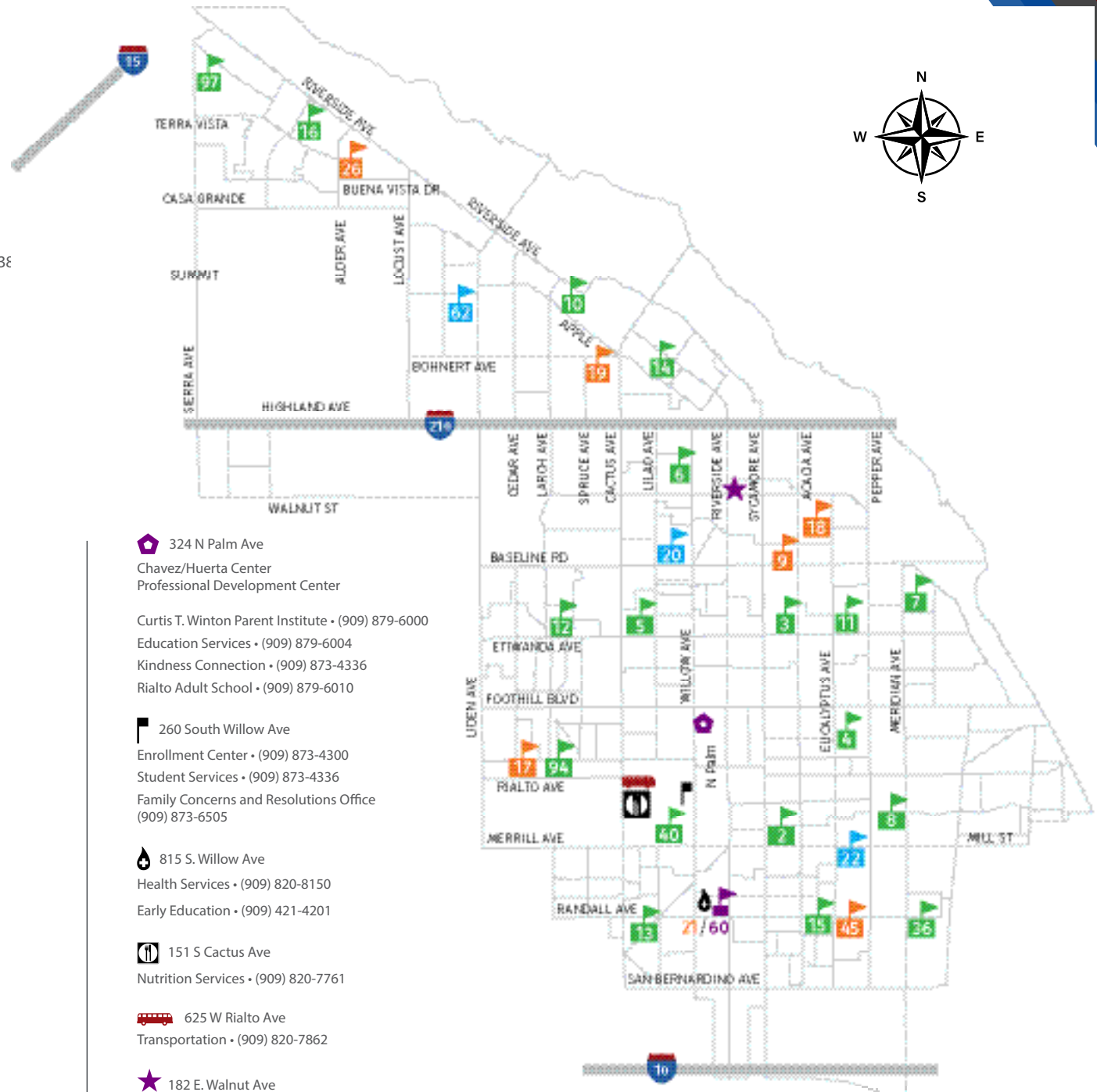
## High Schools (HS)


- 62 - Wilmer Amina Carter HS - 2630 N. Linden Ave • P: (909) 854-4100
- 20 - Dwight D. Eisenhower HS - 1321 North Lilac • P: (909) 820-7777
- 22 - Rialto HS - 595 South Eucalyptus • P: (909) 421-7500
- 21 - Dr. John Milor HS - 266 West Randall • P: (909) 820-8110

## Virtual Academy

- 60 - Charles Zupanic - 266 West Randall • P: (909) 820-8120

\*The codes correspond to the number on the RUSD map.





 324 N Palm Ave  
Chavez/Huerta Center  
Professional Development Center


Curtis T. Winton Parent Institute • (909) 879-6000  
Education Services • (909) 879-6004  
Kindness Connection • (909) 873-4336  
Rialto Adult School • (909) 879-6010

 260 South Willow Ave  
Enrollment Center • (909) 873-4300  
Student Services • (909) 873-4336  
Family Concerns and Resolutions Office  
(909) 873-6505

 815 S. Willow Ave  
Health Services • (909) 820-8150  
Early Education • (909) 421-4201

 151 S Cactus Ave  
Nutrition Services • (909) 820-7761

 625 W Rialto Ave  
Transportation • (909) 820-7862

 182 E. Walnut Ave  
District Office • P: (909) 820-7700



**EDUCATION SERVICES**  
Literacy. Numeracy. Future-Ready



Scan the QR code to visit the Parent Institute website.

Please visit our Rialto USD Curtis T. Winton Parent Institute website at [kec.rialto.k12.ca.us/domain/1452](http://kec.rialto.k12.ca.us/domain/1452)